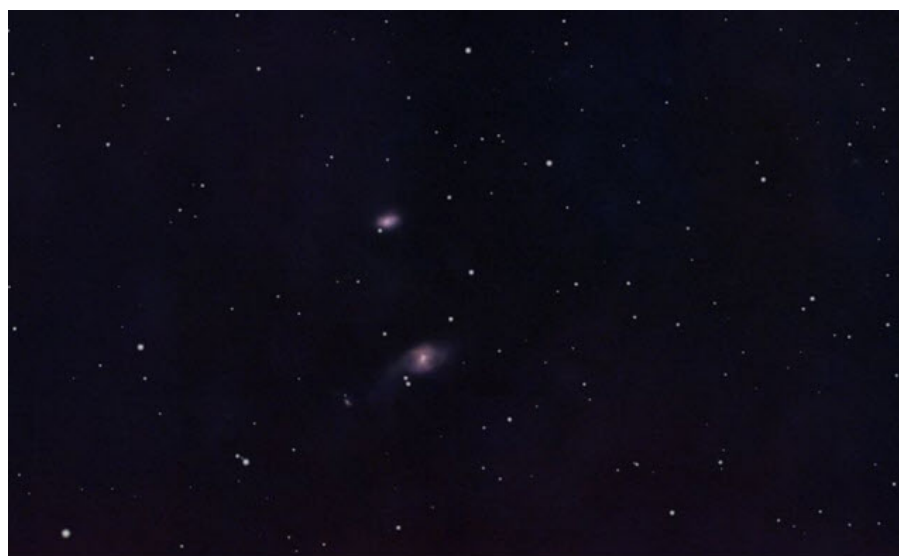


MEMBERS IMAGES JULY 2025

Western veil – Simon Smollett



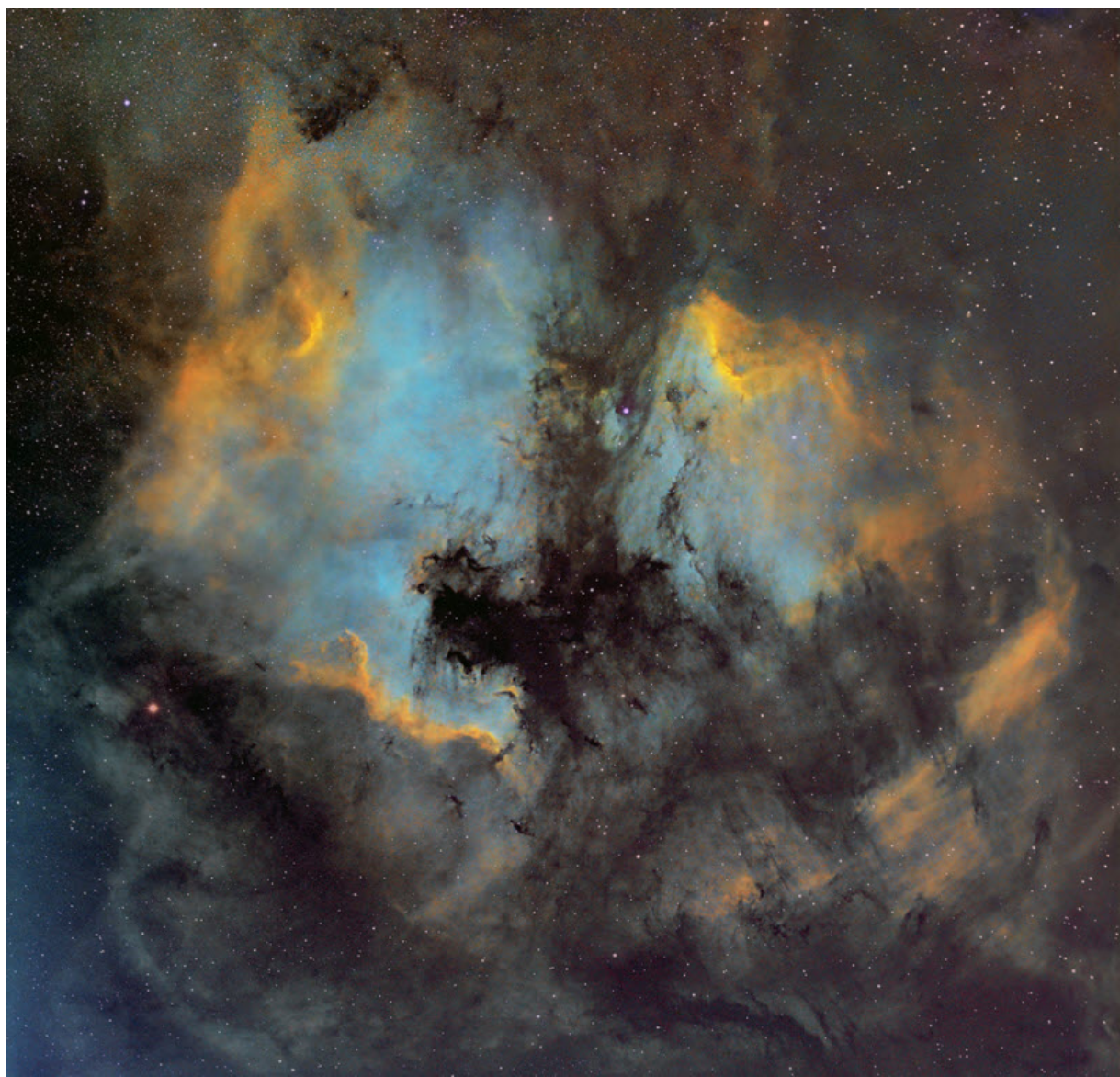
NGC 2841 – Andrew Ramsay

NGC3718 – Andrew Ramsay





M101 Galaxy – Andrew Ramsay – Dwarf 3



NAN
NGC7000,
Pelican
IC5070 and
IC5068

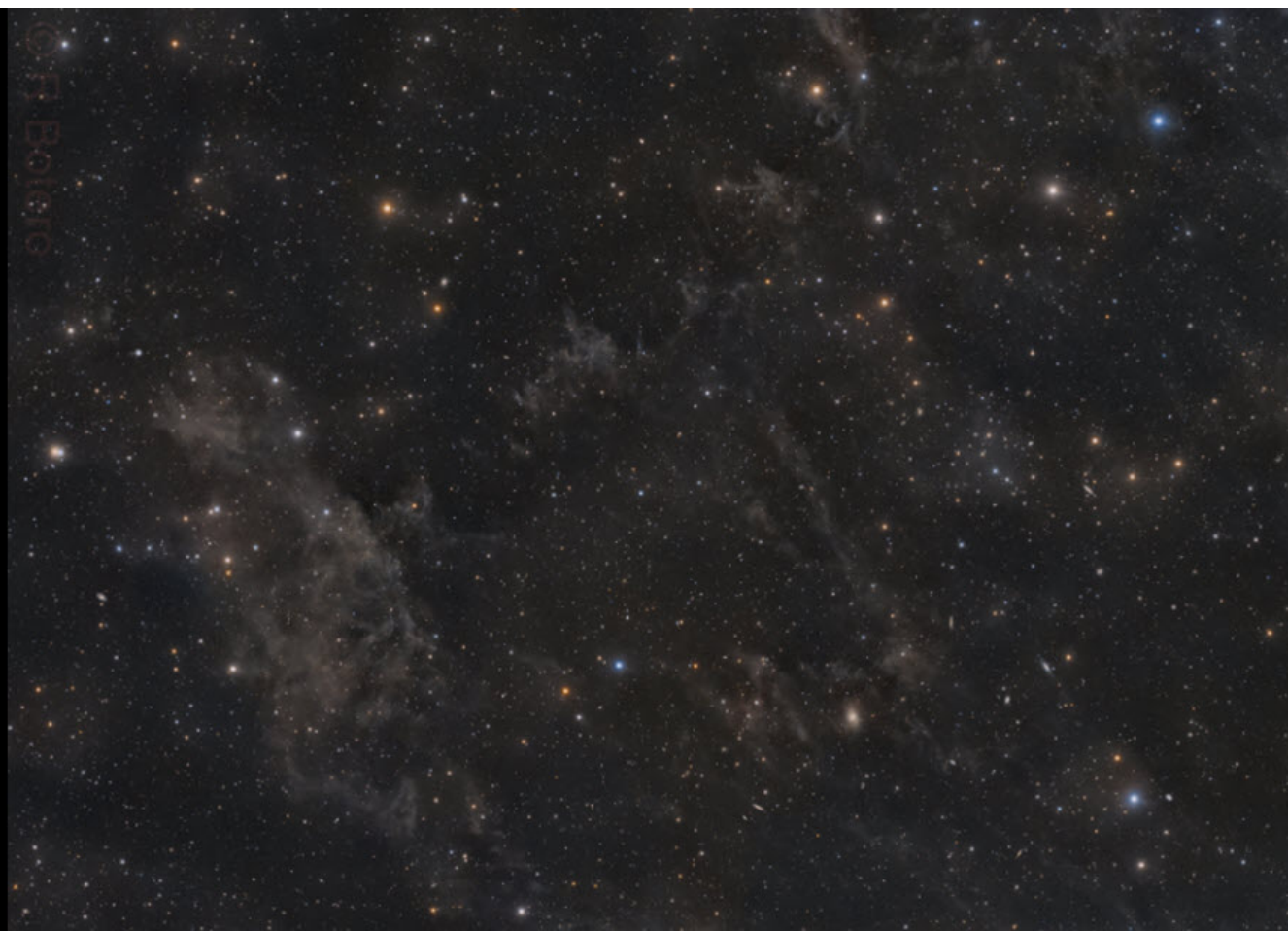
Imaged in
2020 with
Samyang
Lens

Now with
improved
processing

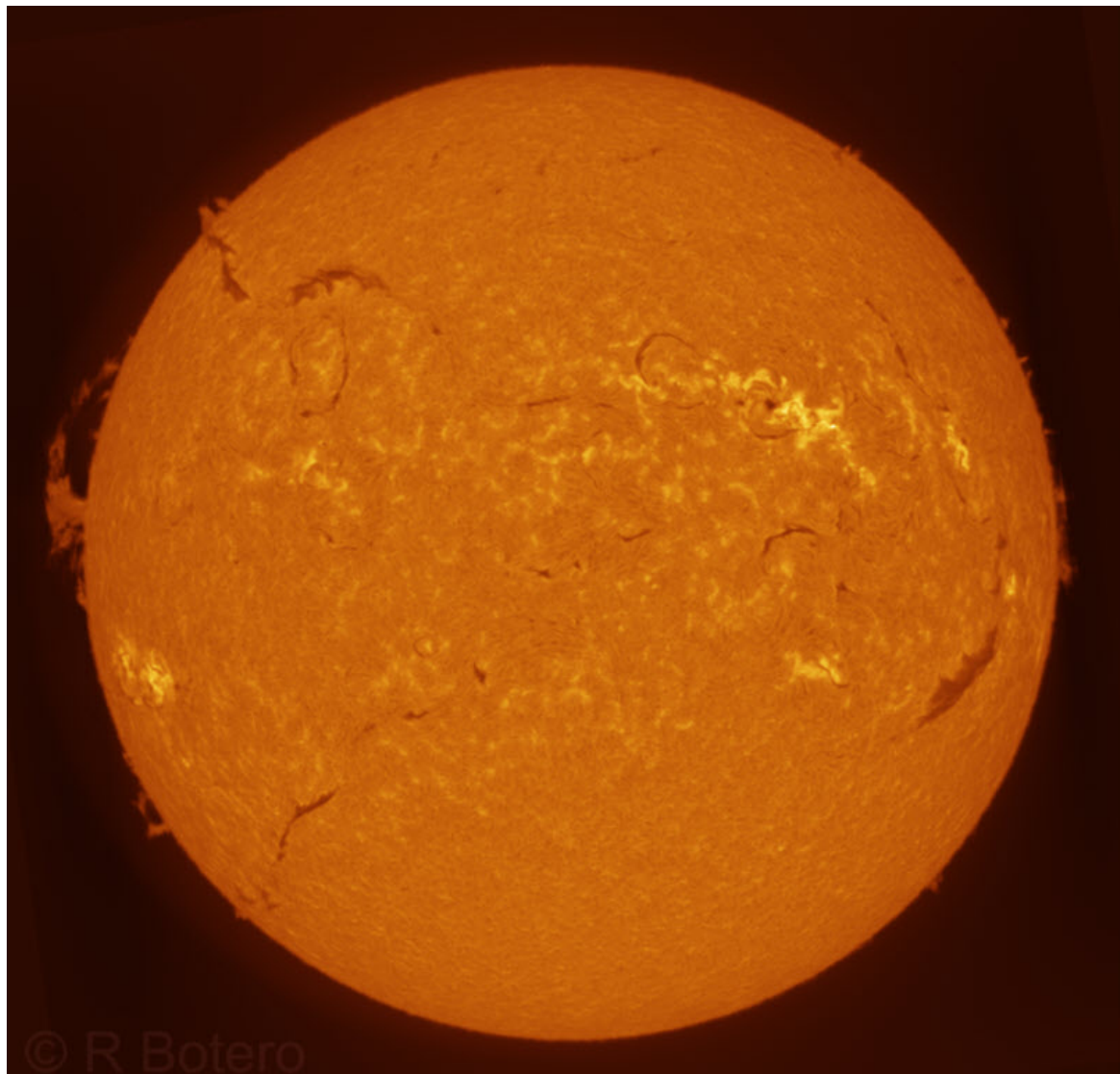
Carole Pope



M51 whirlpool Galaxy – Andrew Ramsay



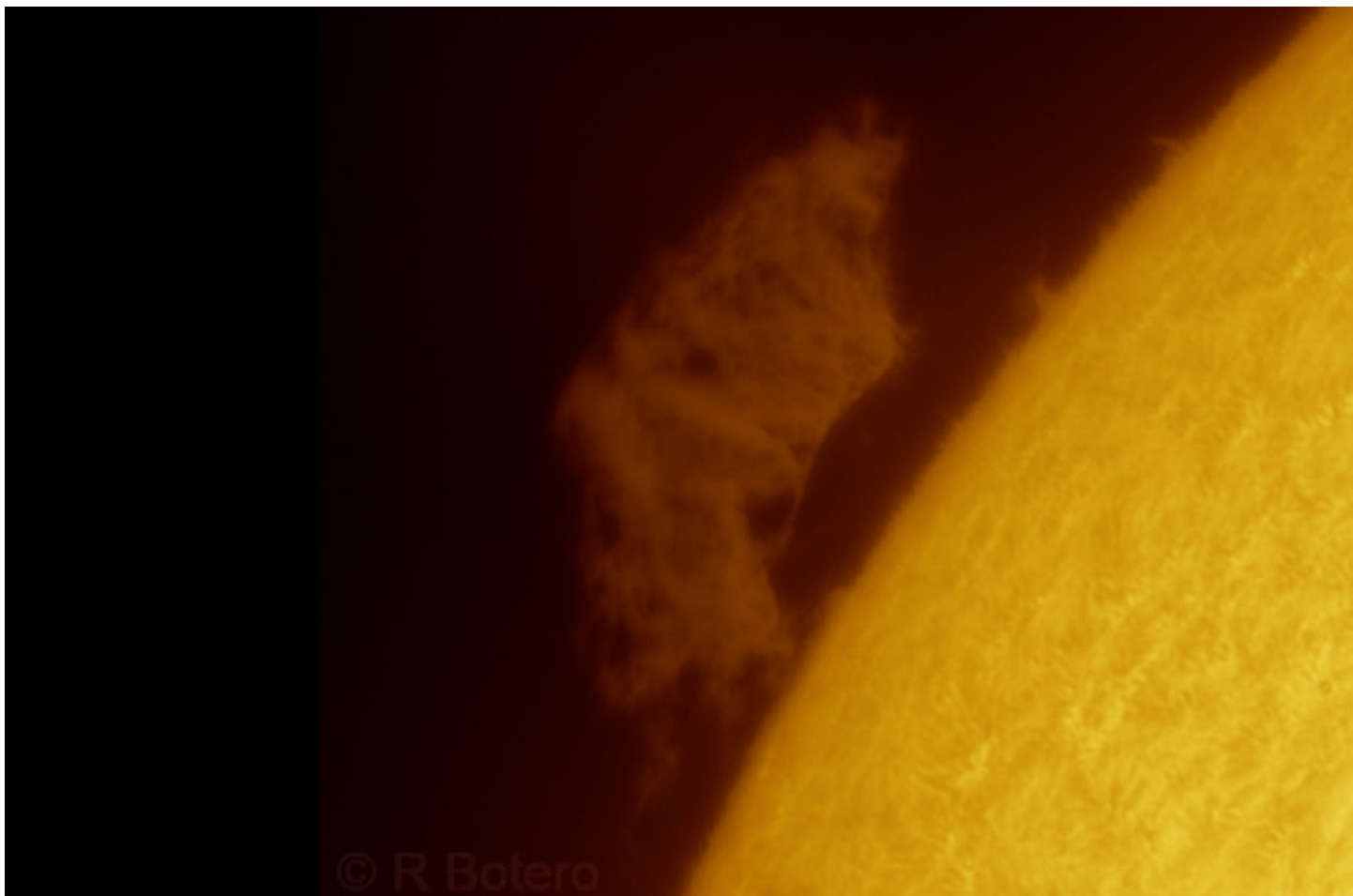
Draco Clouds LBN 406, 413 and plenty of PGC galaxies
LRGB 39h 35m – Roberto Botero (Petts Wood) 2 pane Mosaic (rotated to fit)



**Sun Ha and
CaH - 19
June 2025 -
SHG700**

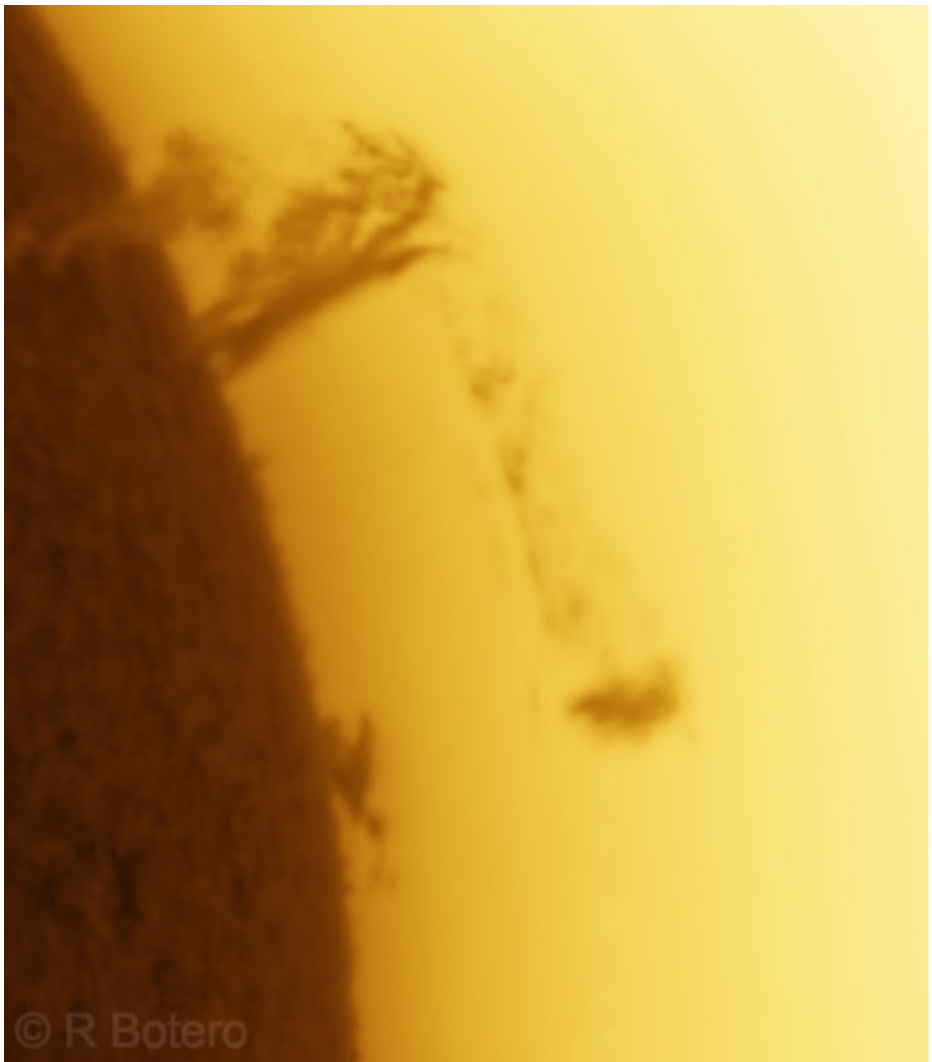
Roberto
Botero

© R Botero



© R Botero

**Sun WL, Ha and CaH - 12 July 2025 - SHG700 and Coronado DS - Huge
prominence and animation on the forum – Roberto Botero**



Sun Ha and CaH –

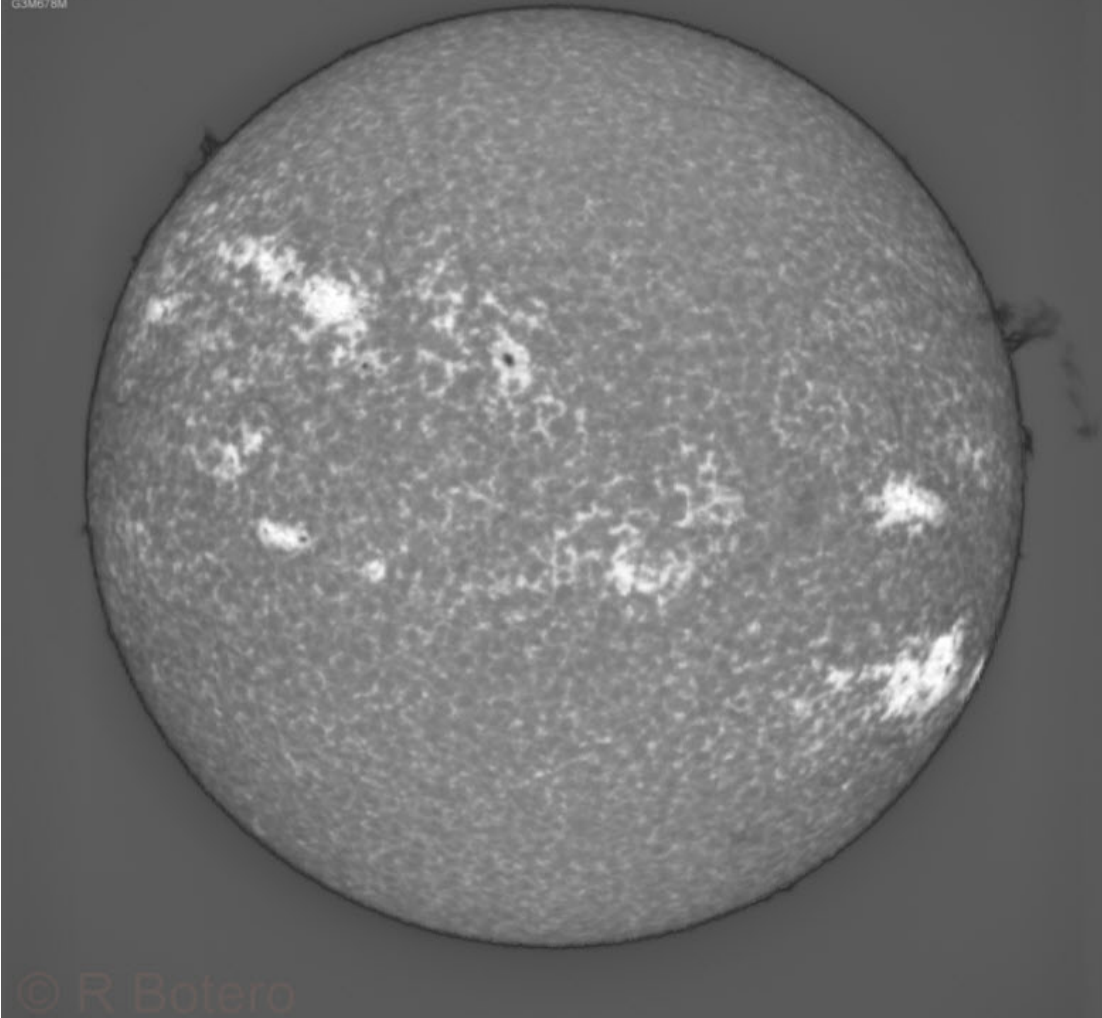
14 June 2025 –

SHG700 and Coronado DS
- Huge prominence

Roberto Botero

© R Botero

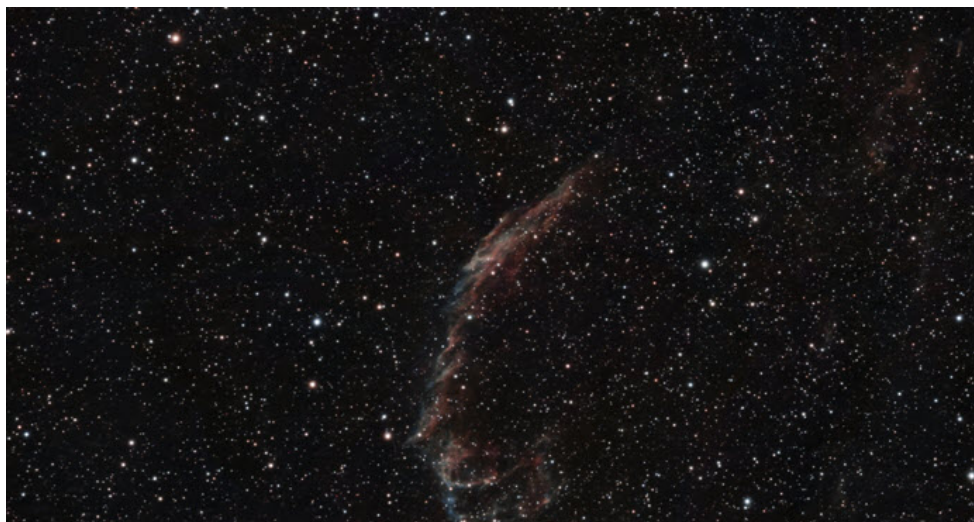
2025-06-14 10:01:21 UTC
MLAstro SHG 700 - Calcium (H) (3968.47Å)
94mm f/7 Moonraker Christen
Focal length 658mm
Aperture 94mm
G3M678M



CaH disc from
spectroheliograph

Roberto Botero

© R Botero



Eastern Veil

(in 2 parts – different
scales)

Simon Smollett



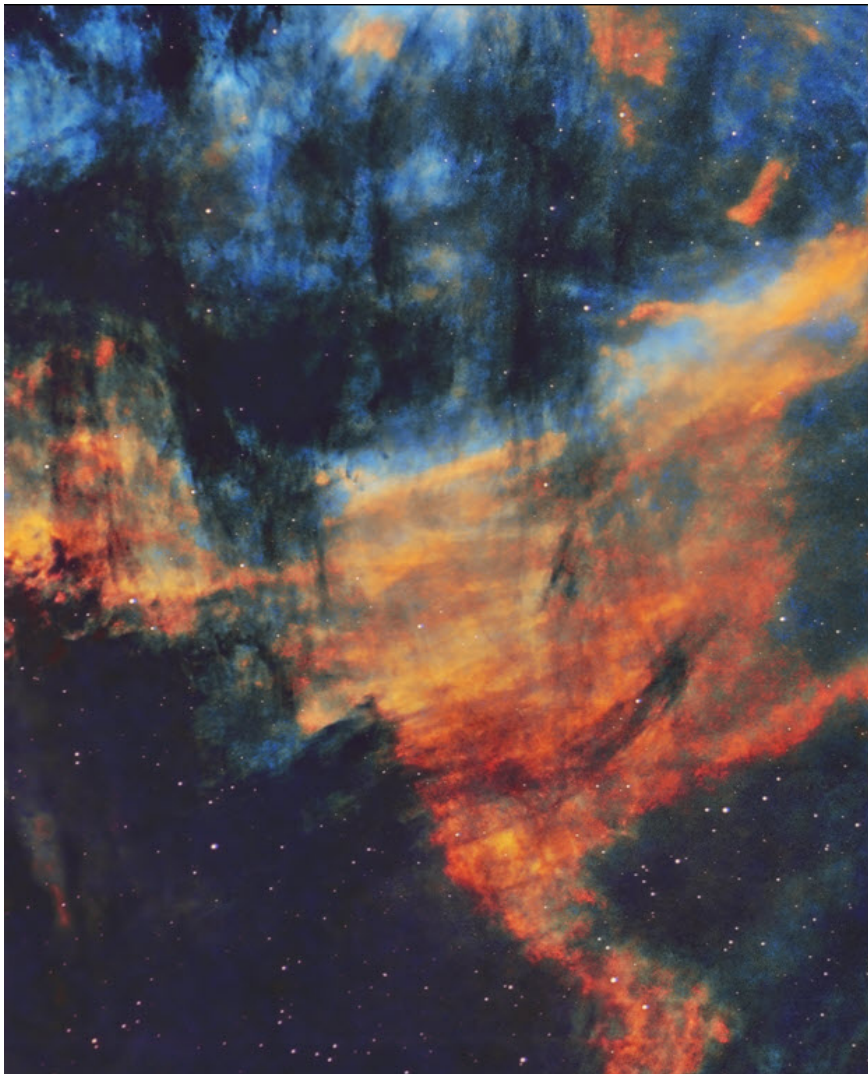
The Blue Horsehead IC4592 (taken at DSC Oct 2024 only 2h 40m)
– Reprocess - Carole Pope



Ek5 - HaOORGB from London

Roberto Botero - Total integration: **98h 5m !!!!!**

Acquired towards the end of astronomical night and pointing above London's LP dome; not the best conditions for a - very - faint, extended planetary. Most of the narrowband data comes from a dual band filter

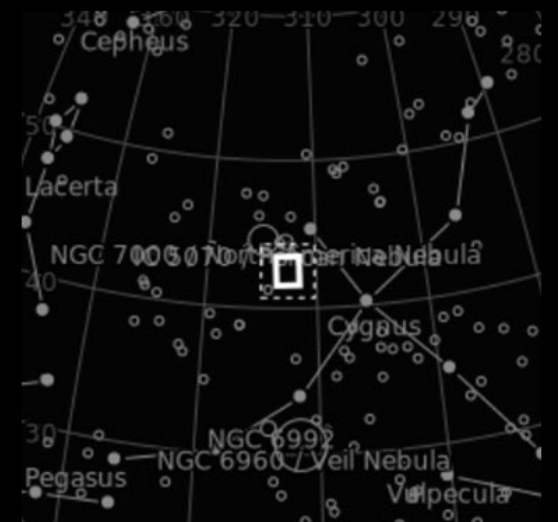


IC5068 in Cygnus (just below the Pelican)

Taken over 4 nights in SHO

Total imaging time 10 hours 15 minutes.

Carole Pope





Rick Summerfield, using a DSLR and Zoom lens – hand held - Chislehurst



Next Deep Sky Camp 17th – 20th October