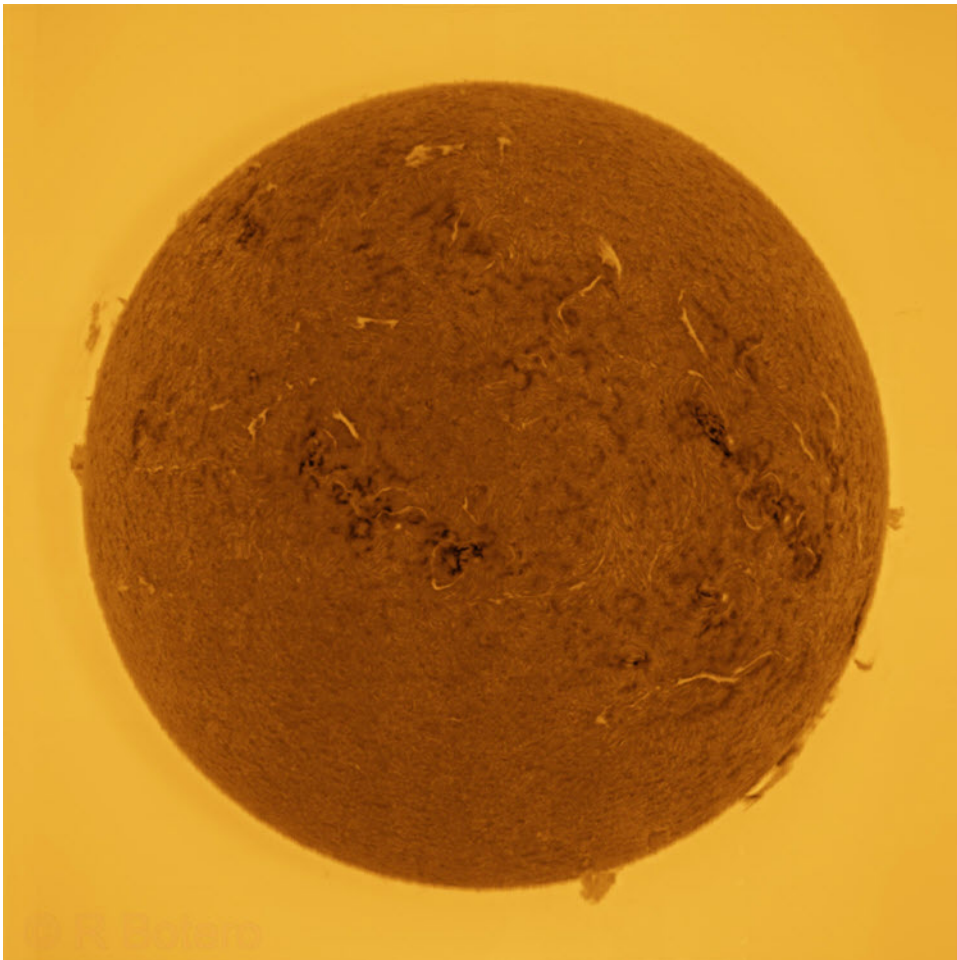


Members Images – May 2025



Fay's M51 that appeared on April Sky at Night. 30x240 SW120 OSC no filter



**Sun Ha & CaK**

**19 March 2025**

Roberto Botero

Acquisition: 7 ×  
0.43ms





**NGC3169, 3165,  
3166, 3156 and  
others in Sextans -  
LRGB with NB**

Over 20 hours

Roberto Botero

Petts Wood Bortle 6



**M35 Cluster & NGC 2158 in Gemini – Simon Smollett**

**Dwarf 3 – Sheringham Norfolk**





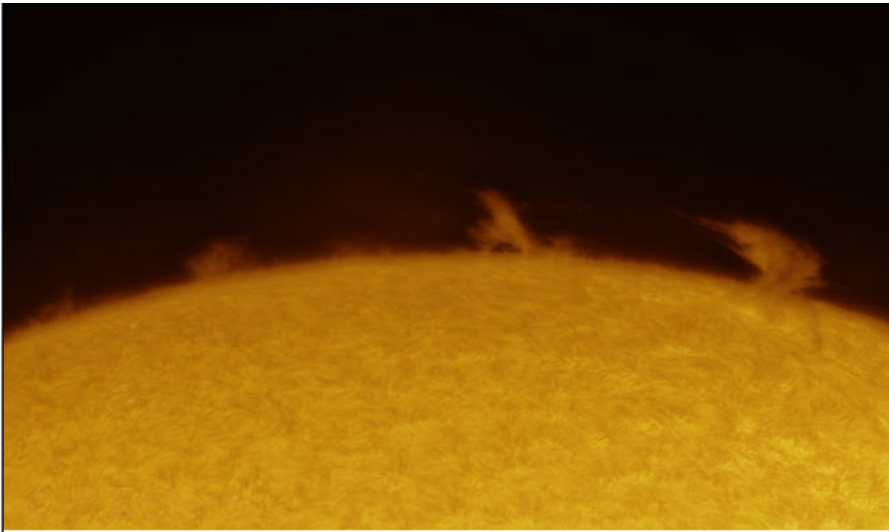
**M35 Cluster & NGC 2158 in Gemini – Simon Smollett**  
**Dwarf 3 – Sheringham Norfolk**



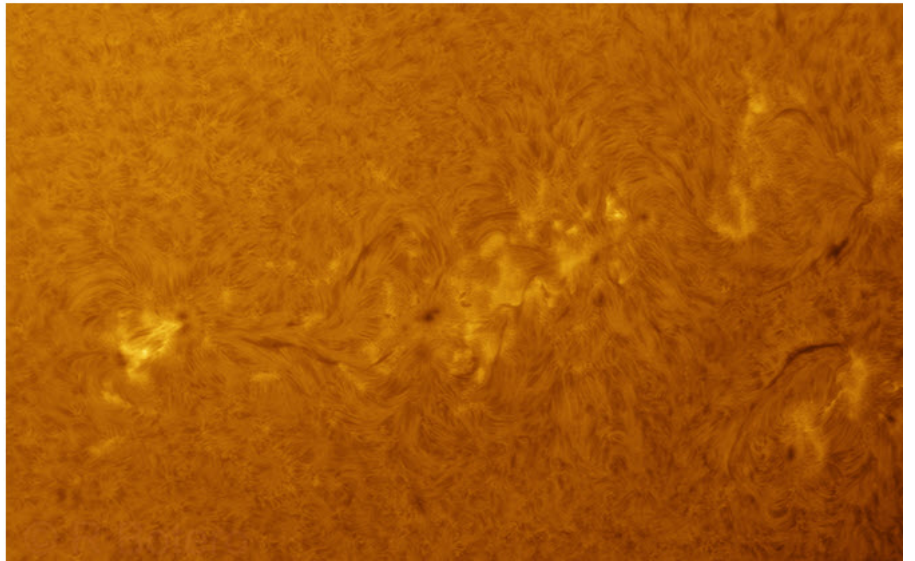
**Abell 1185, including NGC3561 - Ambartsumian's Knot - in Ursa Major**  
 Roberto Botero Total integration: 20h 15m (Bortle 6)



**Roberto Botero**



**Sun WL and Ha - TEC250MC**



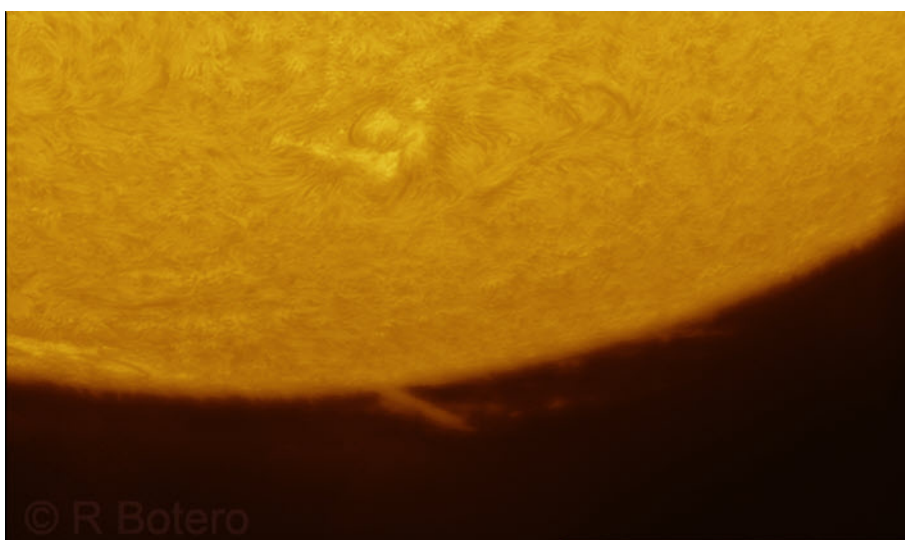
**M13**



**The Whale and the Hockey Stick**  
**15 sec**

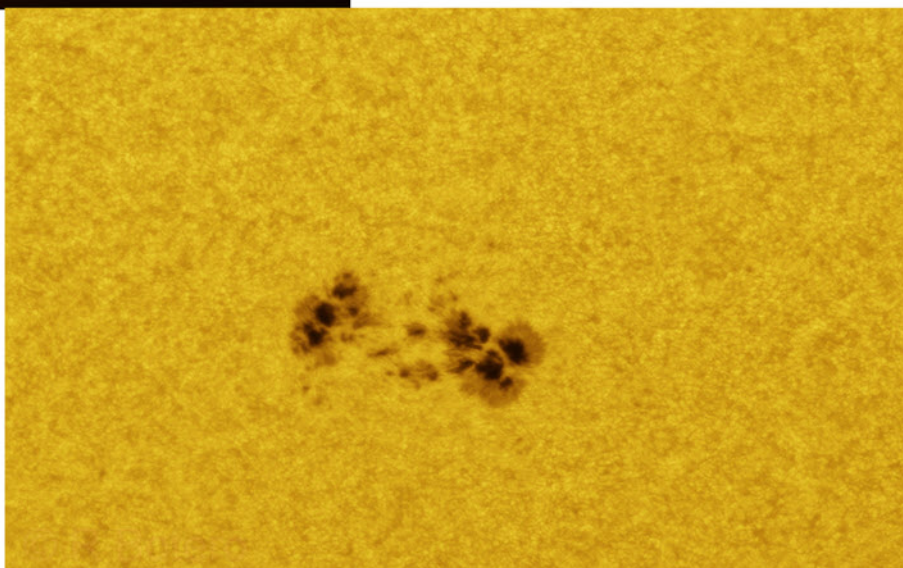
Images from the Gallery by Simon Smollett with his Dwarf 3,

Roberto Botero



© R Botero

94mm Christen-Moonraker -  
AR14054, 4048 and  
Prominences



M106 (crop of a  
wide field) -  
LRGB with dual  
filter data for  
narrowband

31h 35m

Roberto Botero

Bortle 6

© R Botero



# Images from La Palma

- By Duncan Evenden and Robert Mercer who went to La Palma at the end of April and stayed on the West side of the island, so they got a good Southerly horizon



Milky Way rising – La Palma – Duncan Evenden





Milky Way – Duncan in La Palma end April – 18minutes of 20sec subs Canon 1000D



**Cats Paw and Lobster Nebulae** widefield with Samyang 135mm lens & Sony A7S  
**Robert Mercer – La Palma**



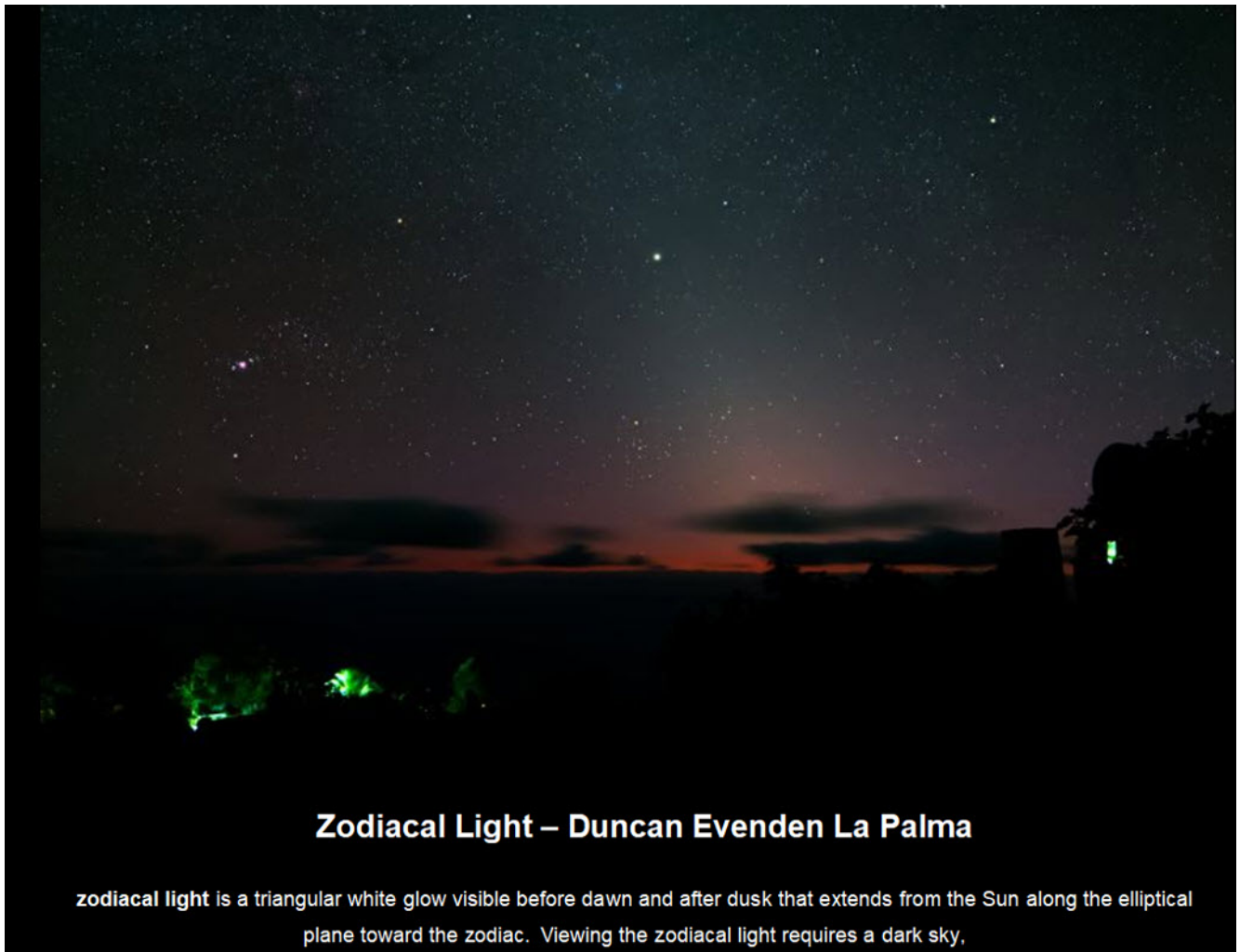
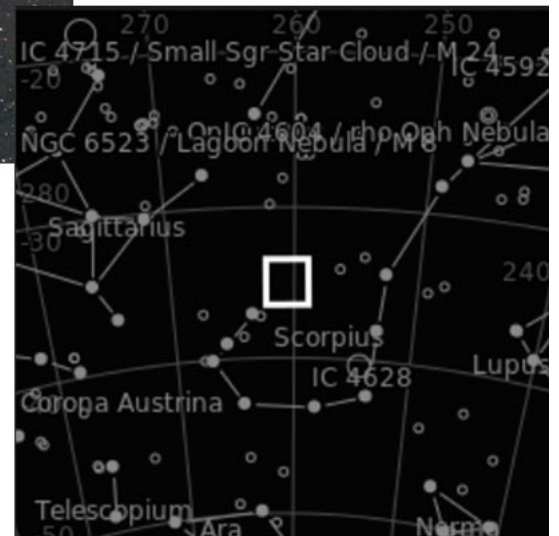


At the end of the  
Scorpion's tail

Lobster Nebula  
NGC6357

CROP

Cat's Paw  
Nebula  
NGC76334



## Zodiacal Light – Duncan Evenden La Palma

**zodiacal light** is a triangular white glow visible before dawn and after dusk that extends from the Sun along the elliptical plane toward the zodiac. Viewing the zodiacal light requires a dark sky,





The Blue Horsehead IC4592 in Scorpio – Robert Mercer - La Palma 2 hrs 10mins with a small mount, telescope and imaging camera.



[Rho Ophiuchi Cloud Complex](#) – Robert Mercer - Location: Puntagorda, Islas La Palma

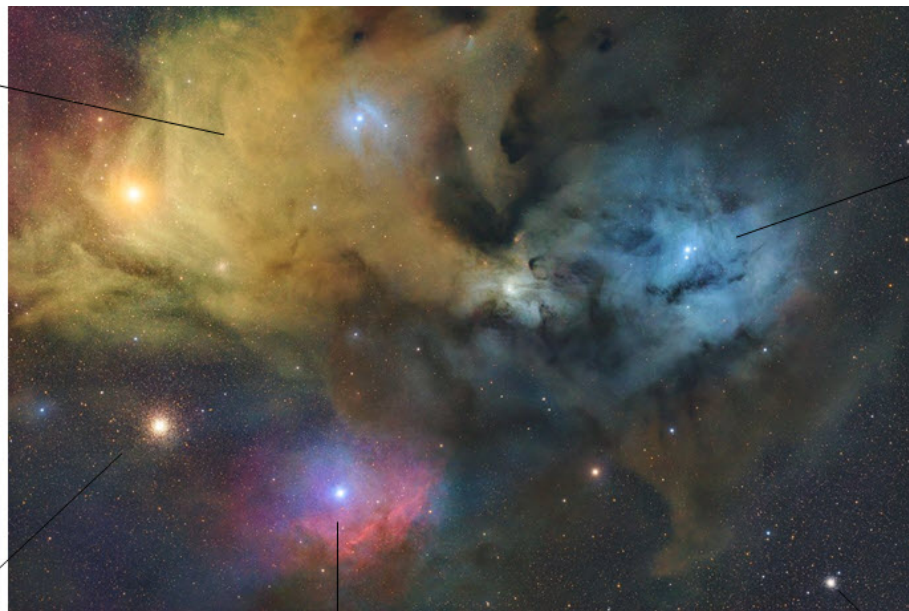
Telescope: ASKAR SQA55, Camera: ASI2600MC Duo – 1 ¾ hours



Antares (Red giant) and the associated orange nebula

Imbedded in the Antares nebula is the blue reflection nebula IC4605 illuminated by the hot blue star 22 Scorpii.

M4 Globular cluster. This cluster is about 75 light years across and 6,000 light years away making it visually the same size as the full moon. It is also notable as the first globular cluster where individual stars were resolved



blue subgiant star Rho Ophiuchi and blue emission nebula

Bottom left of middle is the multiple star system Sigma Scorpii surrounded by both emission and reflection nebula ionised by the star. Also called the Sigma Scorpii nebula the official designation is Sh2-9.

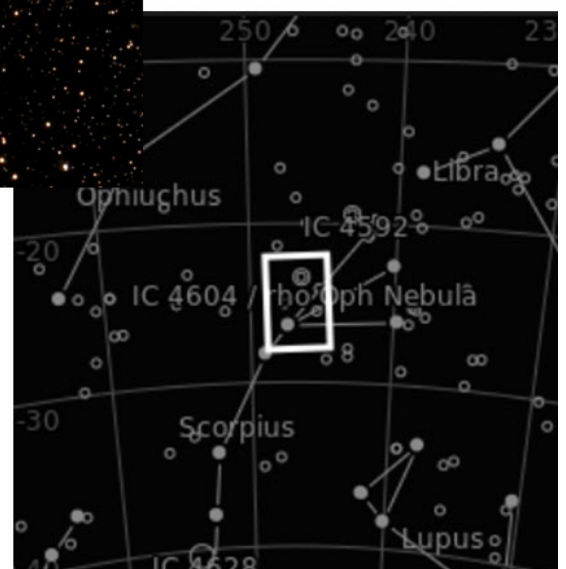
M80, which is 20% larger than M4 but also over five times further away,

[More info on the Forum](#)



Enlarged crop of M4

Located in both Scorpius and Ophiuchus

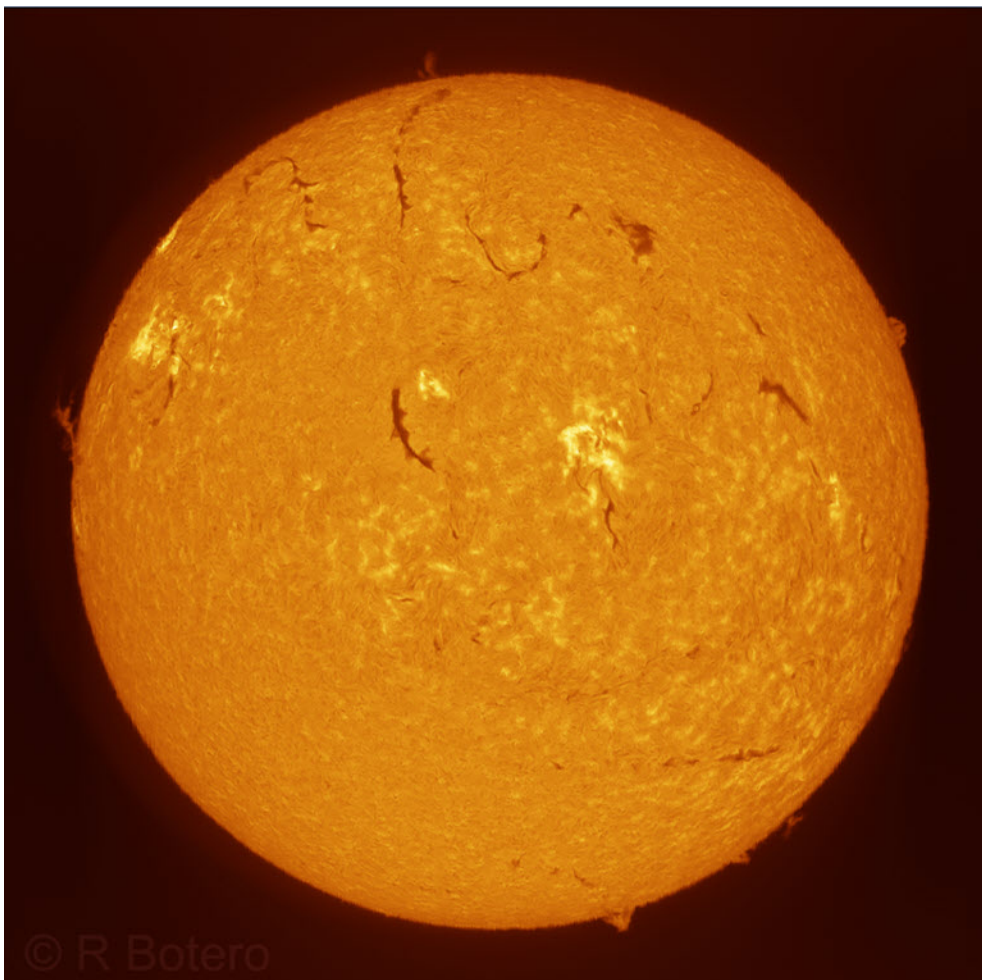






Pinwheel Galaxy M101 and Crescent Moon

Simon Smollett – Dwarf 3



Solar disc in H $\alpha$   
from 16-4-2025

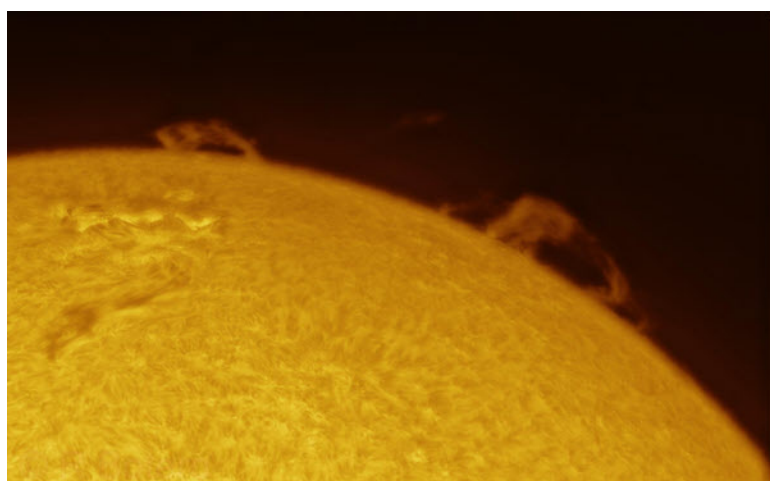
Roberto Botero

Acquisition: 6  $\times$   
0.43ms





**NGC2683, IC2421 in Lynx - LRHaGB – Roberto Botero 43 hours 10m**

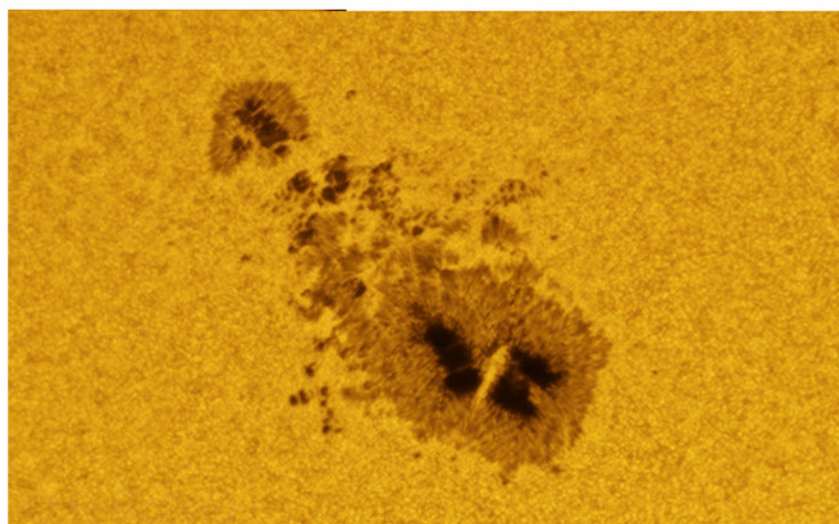


Sun in Ha

Acquisition: 250 ×  
7.18ms

Roberto Botero

**Sun WL - 3 May 2025 -  
AR4079**











### **M51 Whirlpool Galaxy - Paul Whitmarsh**

Taken with Seestar over 13 nights, total exposure 25 hours +

M51 is a pair of interacting galaxies, NGC 5194 and NGC 5195, their last close approach was about 400 million years ago. They are now 500,000 light years apart



### **M81 & M82 – Paul Whitmarsh**

Seestar 50, exposure taken over two days 10h 7m





**M94** AKA as The Cat's Eye Galaxy or The Crocodile's Eye Galaxy.

John Hulme – Bromeley

This is a CROP of the original larger FOV

Using a dual band filter for luminance plus

HaRGB

Total imaging time 13 hours 27 minutes.

N.B. This filter method is one created by John and not a standard method.



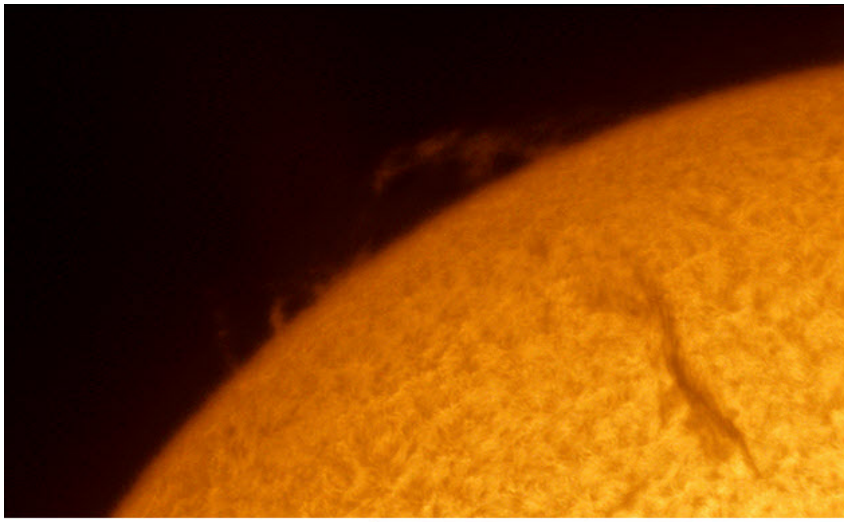
Roberto Botero

Montes Apenninus & Archimedes



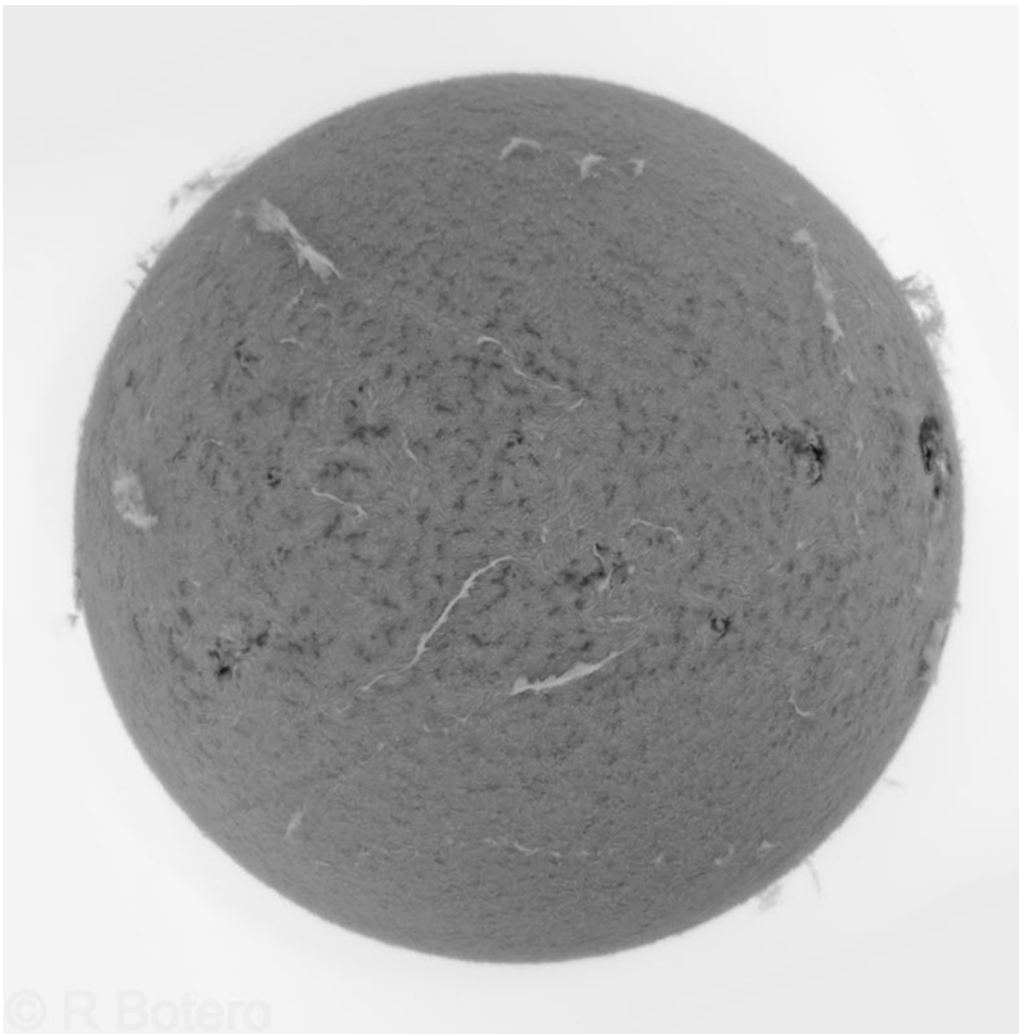
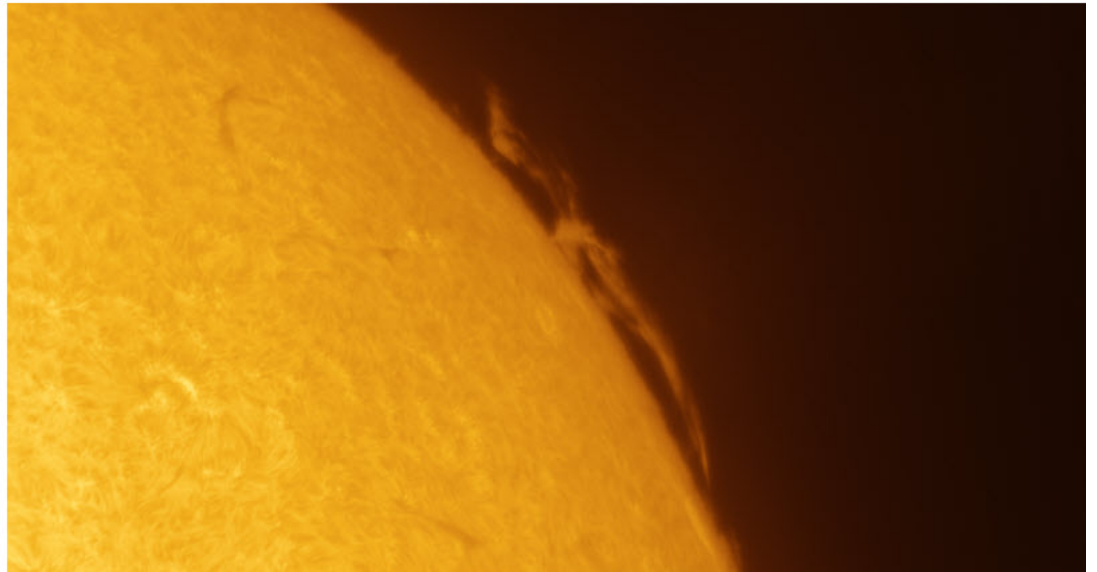
Ptolemaeus, Alphonsus, Arzachel





Sun in Ha = Two Solar  
animations, see them on the  
Forum under Astrophotography.

Roberto Botero



Full disc using  
Solarheliograph700

Roberto Botero





**Next Deep Sky Camp 17<sup>th</sup> – 20<sup>th</sup> October**